



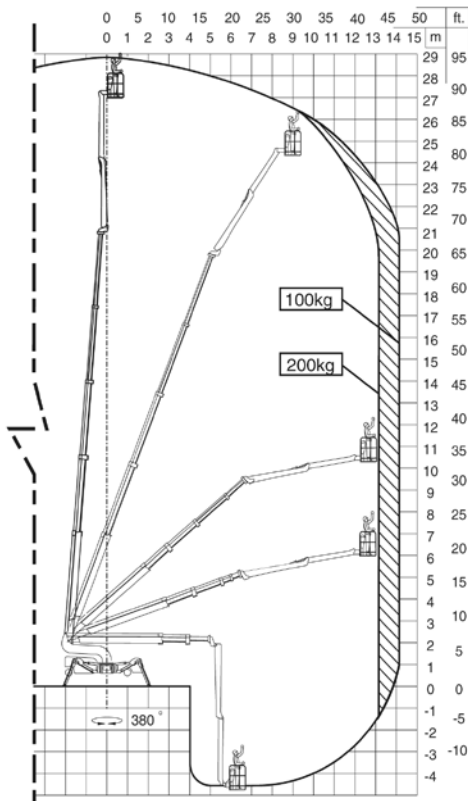
## FS290/FS320 FALCON

Model:	FS290	FS320
Working height:	29 m	32 m
Maximum reach:	14-15 m	14-15 m
Linkarm (2 x 3 m):	6 m	6 m
Double linkarm:	200°	200°
Basket load:	200 kg	200 kg
Aluminium basket:	(0,8 x 1,4 m)	(0,8 x 1,4 m)
Basket rotation (option):	+/- 90°	+/- 90°
Turret rotation:	375°	375°
Dimensions (transport position)		
Total height:	1,98 m	1,98 m
Total length:	6,30 m	7,20 m
Total width:	0,8 m*	0,8 m*
Gradability (standard):	5° / 10%	5° / 10%
Weight approx.:	3.750 kg*	4.150 kg*

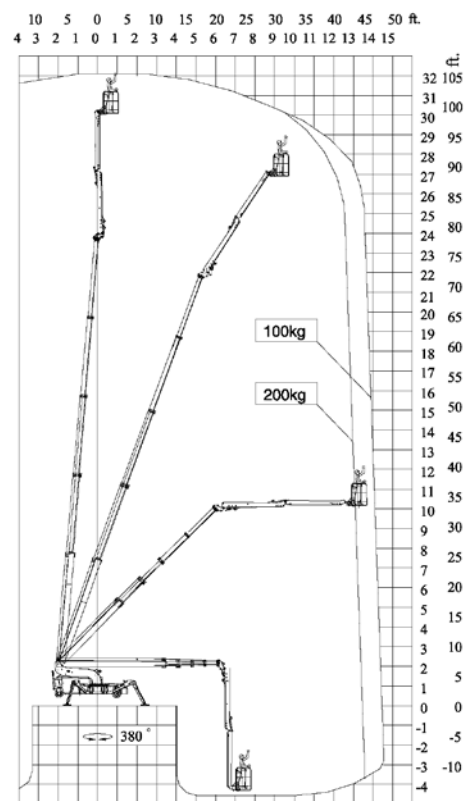
\*Depending on optional equipment



## FS290



## FS320



### Standard equipment:

- Automatic stability & outreach control
- Computer controlled (can-bus)
- Proportional control of all functions
- Self-propelled
- Battery powered with charger (180 Ah)
- Double link-arm system
- 375 ° turret rotation, with integrated stop
- Individual setting of each outrigger
- Electronic checking of the power system (PLC)
- Manual pump system for emergency lowering
- Ability to self-load onto trucks or trailers
- Non marking solid tyres
- Adjustable wheel-axle
- Minimum width only 0.8 m
- Space for tools etc. in basket
- Storage room with lock in chassis
- Wireless remote control of all functions

### Options:

- +/- 90 ° basket rotation
- 220V AC power supply in the basket
- Air/water supply in the basket
- Sensor system on basket
- Diesel engine, Hatz "Silent pack"
- Petrol generator, Honda
- 220V AC direct powered electro motor
- Extra batteries
- Autosetting/levelling
- Cover
- Special outrigger footplates
- Basket in various sizes
- Slope alarm
- 2 wheel drive (10 °/18 % climb)
- 3 wheel drive (15 °/26 % climb)(width 0,95 m)
- Twin wheels on rear axle
- Special colour
- Height control switch